

1. St Paul's Church, Bow Common
Corner of Burdett Road
and St Paul's Way, E3 4AR

Opening Hours
Monday to Saturday 10am-4pm

Ship of Dreams is a collection of eleven textile tapestries, made by nineteen local community and schools groups, working with Stitches in Time artists. To explore themes around the River Thames and textile maps from the Millennium Tapestry Collection. Visitors can take part in Friendship Ribbon workshops and view quilting demonstrations by local volunteers.

Friendship Ribbon Textile Workshops FREE

Thu	Jul 26	2.00-4.00pm
Tue	Jul 31	2.00-4.00pm
Thu	Aug 2	2.00-4.00pm
Tue	Aug 7	2.00-4.00pm
Thu	Aug 9	2.00-4.00pm
Fri	Aug 10	2.00-4.00pm
Sat	Aug 11	2.00-4.00pm
Mon	Aug 13	2.00-4.00pm
Tue	Aug 14	2.00-4.00pm
Thu	Aug 16	2.00-4.00pm
Fri	Aug 17	2.00-4.00pm
Sat	Aug 18	2.00-4.00pm
Mon	Aug 20	2.00-4.00pm
Tue	Aug 21	2.00-4.00pm
Thu	Aug 23	2.00-4.00pm
Fri	Aug 24	2.00-4.00pm



Medieval Parish

2. Limehouse Town Hall
646 Commercial Rd, E14 7HA

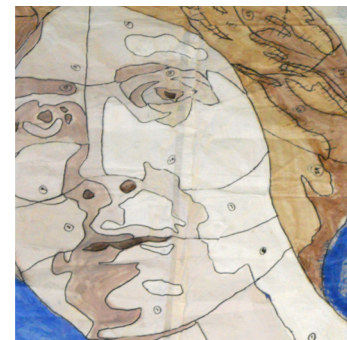
Opening Hours
Monday to Saturday 10am-4pm

Thirteen textile hangings, made by community and schools groups with Stitches in Time artists, mapping the social history of local communities. Work on display includes From Russia Lane To Bethnal Green, A Map Of Poplar, The Tea Garden, Food From The Docks and Airbrushed In. Visitors can take part in Friendship Ribbon workshops and view quilting demonstrations by local volunteers.

No disabled access

Friendship Ribbon Textile Workshops FREE

Wed	Jul 18	10.30-12.30pm
Wed	Jul 25	10.30-12.30pm
Thu	Jul 26	2.00-4.00pm
Fri	Jul 27	10.30-12.30pm
Wed	Aug 1	10.30-12.30pm
Wed	Aug 8	10.30-12.30pm
Wed	Aug 15	10.30-12.30pm
Wed	Aug 22	10.30-12.30pm



Women of Bow

3. Tower Hamlets Community Housing
285 Commercial Road
Stepney, E1 2PS

Opening Hours
A window installation on display throughout the exhibition

An installation of textile work from the Builders of Commercial Road project 2006 – 2008, and made by eight community groups. The work explores the story of imports of tea, cotton and sugar into the East India Docks.



Builders of Commercial Road

4. Mulberry School for Girls
Richard Street
Commercial Road, E1 2JP

Opening Hours
Monday to Friday 10am-4pm

FABRIC is an installation exploring textile techniques in wool, cotton, silk and lace making. Stitches in Time artists worked with local schools parents and children's groups in Shadwell, Tower Hamlets. Visitors can take part in Friendship Ribbon workshops.

Friendship Ribbon Workshops FREE

Fri	Jul 13	11.00-2.00pm
Mon	Jul 23	11.00-2.00pm
Mon	Jul 30	11.00-2.00pm
Fri	Aug 3	11.00-2.00pm
Sat	Aug 4	11.00-2.00pm
Mon	Aug 6	11.00-2.00pm



FABRIC



Ship of Dreams



Food From The Docks



Cargoes

Take part in artist led textile workshops for the Friendship Ribbon project, and work with local residents and visitors, on a site specific installation, celebrating friendship and common heritage.

The Textile Circuit Exhibition and Friendship Ribbon workshops are FREE (no booking required).

Each venue showcases the work made by local communities. It explores how trade and work with London Docks linked the world, to the Irish and Scottish dock builders, the sailors from Sylhet, Somalia, Africa and China that settled in the East End, who have all shaped the present day Tower Hamlets. Participants offer a view of the docks today.

The Textile Circuit is a large-scale exhibition programme, at 8 community venues, from Bow along the Commercial Road London E14 to the Tower of London.

These venues form a circuit linking the community to the heritage of the local area with textile art work made over the last six years.

5. St Dunstan's Church
Stepney High Street, E1 0NW

Opening Hours
Every Tuesday, Thursday, Friday, Saturday 10am-4pm

On display is the Medieval Parish textile tapestry. This large hand stitched and painted tapestry was made in 1999, by local groups working with Stitches in Time to explore the medieval history of Tower Hamlets. St Dunstan was the patron saint of sailors. Visitors can take part in Friendship Ribbon workshops.

Friendship Ribbon Workshops FREE

Sat	Jul 21	2.00-4.00pm
Sat	Jul 28	2.00-4.00pm
Sat	Aug 4	2.00-4.00pm

6. The Women's Library
London Metropolitan University
25 Old Castle Street E1 7NT

Opening Hours
Monday to Saturday 10am-4pm

A textile hanging of Sylvia Pankhurst made by community groups working with Stitches in Time artists. This embroidered portrait commemorates her role in the history of women's suffrage. Visitors can take part in Friendship Ribbon workshops.

Friendship Ribbon Workshops FREE

Tue	Jul 17	2.00-4.00pm
Tue	Jul 24	2.00-4.00pm
Tue	Jul 31	2.00-4.00pm
Tue	Aug 7	2.00-4.00pm
Tue	Aug 14	2.00-4.00pm
Tue	Aug 21	2.00-4.00pm

7. Hermitage Community Moorings
16 Wapping High Street
Wapping E1W 1NG

13 July to 25 July

Opening Hours
Monday to Saturday 10am-4pm

An exhibition of textile cargo box sculptures, made by community groups working with Stitches in Time artists. Exploring the import of exotic goods and the work of sailors who came from around the world to the East India Docks. Visitors can take part in Friendship Ribbon workshops.

Friendship Ribbon Textile Workshops FREE

Mon	Jul 16	10.30-12.30pm
		2.00-4.00pm
Tue	Jul 17	2.00-4.00pm
Wed	Jul 18	10.30-12.30pm
Fri	Jul 20	10.30-12.30pm
		2.00-4.00pm
Sat	Jul 21	10.30-12.30pm
		2.00-4.00pm
Mon	Jul 23	10.30-12.30pm



Tea Cape and Hat



Stitches in Time
Limehouse Town Hall
646 Commercial Road
London, E14 7HA

Telephone
020 7987 6164

Email
info@stitchesintime.org.uk

Website
www.stitchesintime.org.uk

Twitter
@StitchesinTime_

Like us on Facebook

Reg Charity No
1093279

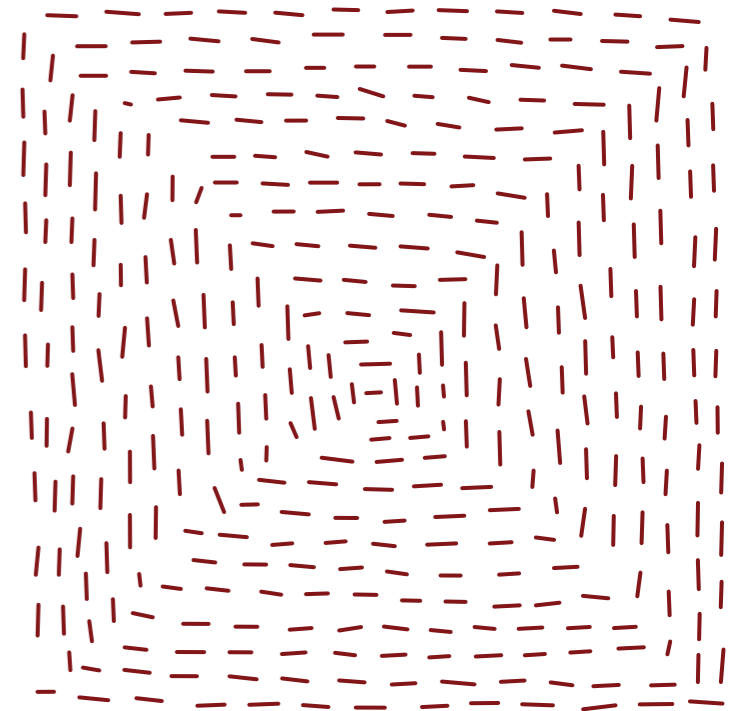


Funders

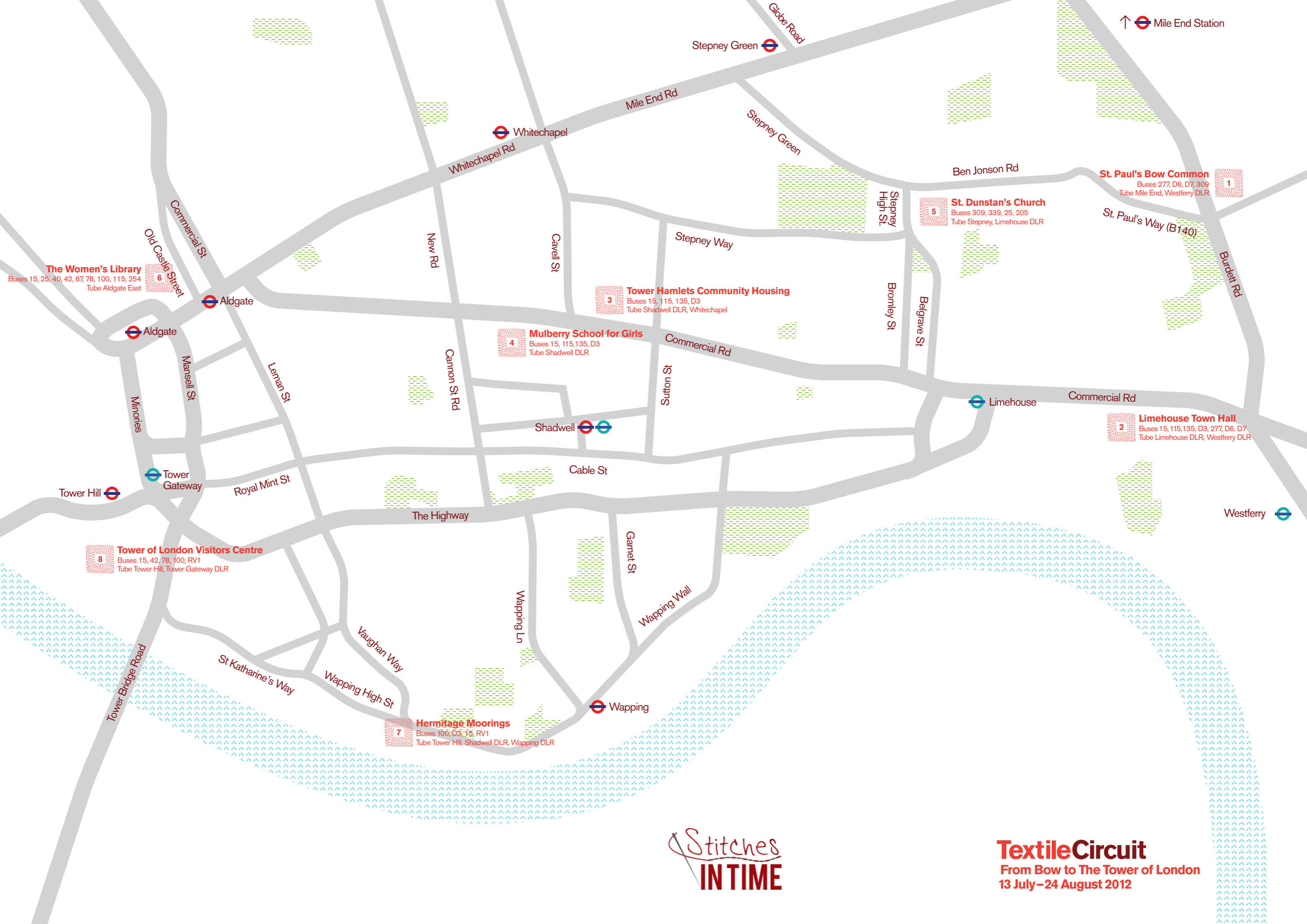


GLE Community Fund
The Wakefield & Tetley Trust

Supported by St Paul's Church Bow Common, Hermitage Community Moorings, Limehouse Town Hall, Mulberry School for Girls and Parkwood Leisure, St Dunstan's Church, Tower Hamlets Community Housing, Tower of London Visitors Centre, The Women's Library.



Textile Circuit
From Bow to The Tower of London
13 July – 24 August 2012



↑ Mile End Station

Stepney Green

Whitechapel

1 St. Paul's Bow Common
Buses 277, D6, D7, 309
Tube Mile End, Westferry DLR

5 St. Dunstan's Church
Buses 309, 339, 25, 205
Tube Stepney, Limehouse DLR

3 Tower Hamlets Community Housing
Buses 15, 115, 135, D3
Tube Shadwell DLR, Whitechapel

4 Mulberry School for Girls
Buses 15, 115, 135, D3
Tube Shadwell DLR

2 Limehouse Town Hall
Buses 15, 115, 135, D3, 277, D6, D7
Tube Limehouse DLR, Westferry DLR

6 The Women's Library
Buses 15, 25, 40, 42, 67, 78, 100, 115, 254
Tube Aldgate East

8 Tower of London Visitors Centre
Buses 15, 42, 78, 100, RV1
Tube Tower Hill, Tower Gateway DLR

7 Hermitage Moorings
Buses 100, D3, 15, RV1
Tube Tower Hill, Shadwell DLR, Wapping DLR

Stitches
IN TIME

TextileCircuit
From Bow to The Tower of London
13 July - 24 August 2012